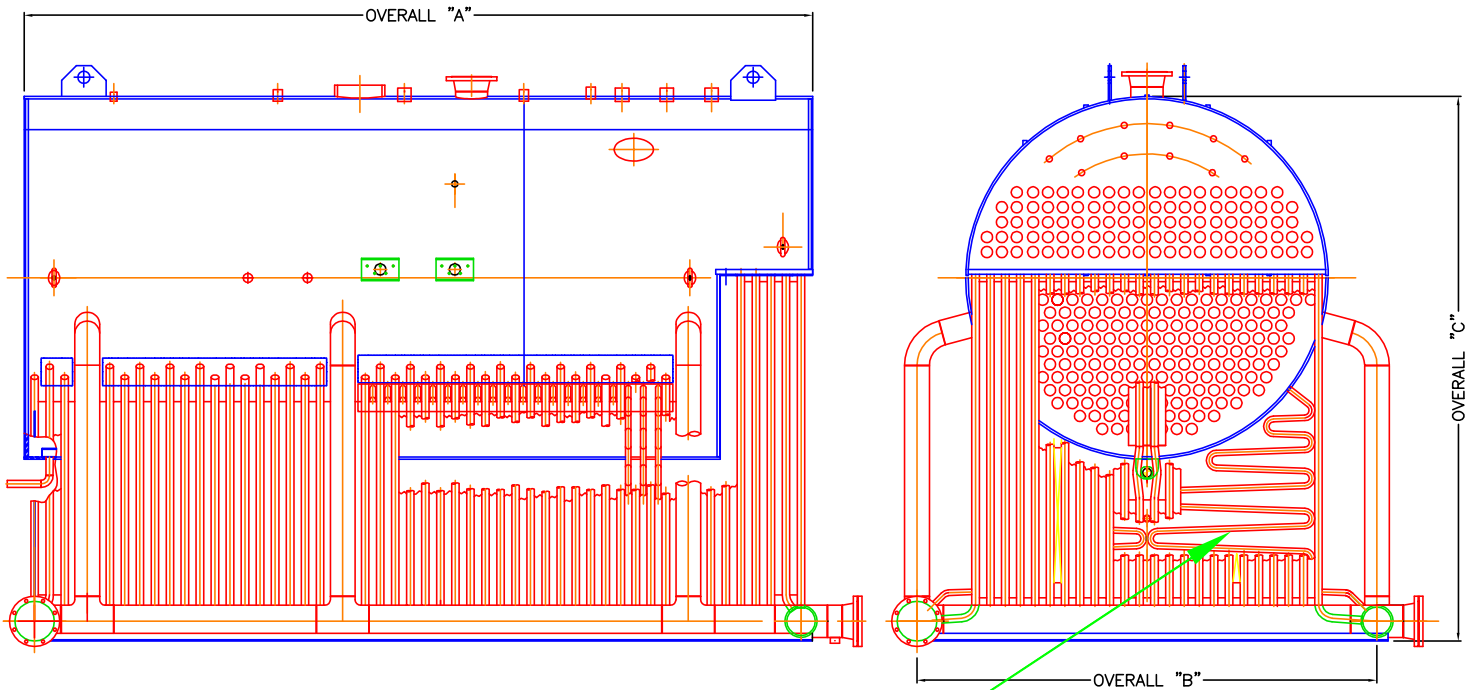


PHYSICAL DATA

HYBRIDE TYPE BOILER



**EXTENSIVE CONVECTION
SURFACE**

**OUR HYBRIDE BOILERS CAN BE ADAPTED FOR HOT WATER AND HIGH OR LOW PRESSURE STEAM
WOOD OR OTHER WASTE MAY BE BURNED**

MAWP 150#

DESIGNED BY:



THERMODESIGN INC.

1541 DE COULOMB, BOUCHERVILLE, Qc, Canada
J4B 8C5 TEL: 450-641-4204 FAX: 450-641-4211

ALL DIMENSIONS ARE IMPERIAL

BOILER MODEL NUMBER	CAPACITY # / HR	- A - LENGTH	- B - WIDTH	- C - HEIGHT	- D - GAS OUTLET	WEIGHTS (In Pounds)	
						DRY	FLOODED
H4,200	24,150PPH	211 1/2"	123 3/8"	144 3/8"	90 7/8" x 21 3/8"	49,500	103,500
H4,500	25,895PPH	211 1/2"	123 3/8"	144 3/8"	90 7/8" x 21 3/8"	52,000	107,000

DESIGNS FOR BOILERS AVAILABLE UPON REQUEST

MANUFACTURED &
DISTRIBUTED BY :



1541 de Coulomb, Boucherville, Qc, Canada J4B 8C5

TEL: 450-641-9140 FAX: 450-641-9141 WEB SITE: www.boilerclub.com

DOC. NO: HYBRIDE

04-04 REV.A

PHYSICAL DATA

HYBRIDE TYPE BOILER



**TYPICAL HYBRIDE BOILER
WITH EXTENSIVE
CONVECTION SURFACE**



**EXTENSIVE CONVECTION
SURFACE**

DESIGNED BY:



THERMODESIGN INC.

1541 DE COULOMB, BOUCHERVILLE, Qc, Canada
J4B 8C5 TEL: 450-641-4204 FAX: 450-641-4211